

product catalogue

Best price,
prompt delivery,
quality service.

SEHA[®]
brand tyres

best fit for your needs



ABOUT US

SEHA one of Turkey's leading exporters of Agricultural, Industrial and Implement tyres. Seha sells tyres under the company's own brand SEHA. Seha distributes a wide range of Seha Brand Agricultural, OTR, E/M and Industrial tyres to more than 70 countries. Seha has been ranked as one of the fifth biggest tyre exporter in Türkiye since 1992.

OUR VISION

To protect our being 5th biggest exporter position in tyre sector and to left effectiveness of our firm and SEHA Brand all over the World markets.

OUR MISSION

In the sectors we exist, to enhance our value-adding ability, to increase employment and being able to produce new technologies. Sustaining our reliability in every market we run business.

QUALITY

The company applies ISO 9001 Quality Management System, ISO 14001 Environmental Management System and TS 18001 Labor Health and Safety Systems. Each and every product is produced according to local and international standards (TDE, ETRTO, ECE R54).





SEHA[®]
brand tyres

best fit for your needs

INDEX

About Us

AGRICULTURAL TYRES

Radial Tractor Tyres

Front Tractor Tyres

Rear Tractor Tyres

Harvester Tyres

Flotation Tyres

Implement Tyres

INDUSTRIAL, EM, OTR TYRES

Radial Em Tyres

Em / Industrial Tyres

Off The Road Tyres

Compactor Tyres

Forklift Tyres

LCV TYRES

Light Truck & Minibus Tyres

MPT TYRES

Military Tyres

RADIAL TRACTOR

FRONT TRACTOR



AGR010 / AGR011



KNK30 / SH-42 / KNK32 / KNK35 / KNK50 / SH-39

REAR TRACTOR

HARVESTER



KNK50 / SH-39 / KNK53 / KNK55



KNK48 / KNK50 / SH-39

FLOTATION



KNK25 / TALAS-23 / KNK26 / KNK27 / KNK28 / KNK42 / KNK48



KNK52 / KNK56 / KNK46

IMPLEMENT



KNK50

KNK52

KNK54

KNK140

KNK48

SH-39

RADIAL EM

EM / INDUSTRIAL



OR71

KNK44

KNK65

KNK66

IND80

IND88

SH-R4-IND

OFF THE ROAD

COMPACTOR

FORKLIFT



KNK70

KNK72

KNK74

KNK77

KNK88

KNK40

LIGHT TRUCK & MINIBUS

MILITARY



KNK20

KNK24

KNK25

KNK126

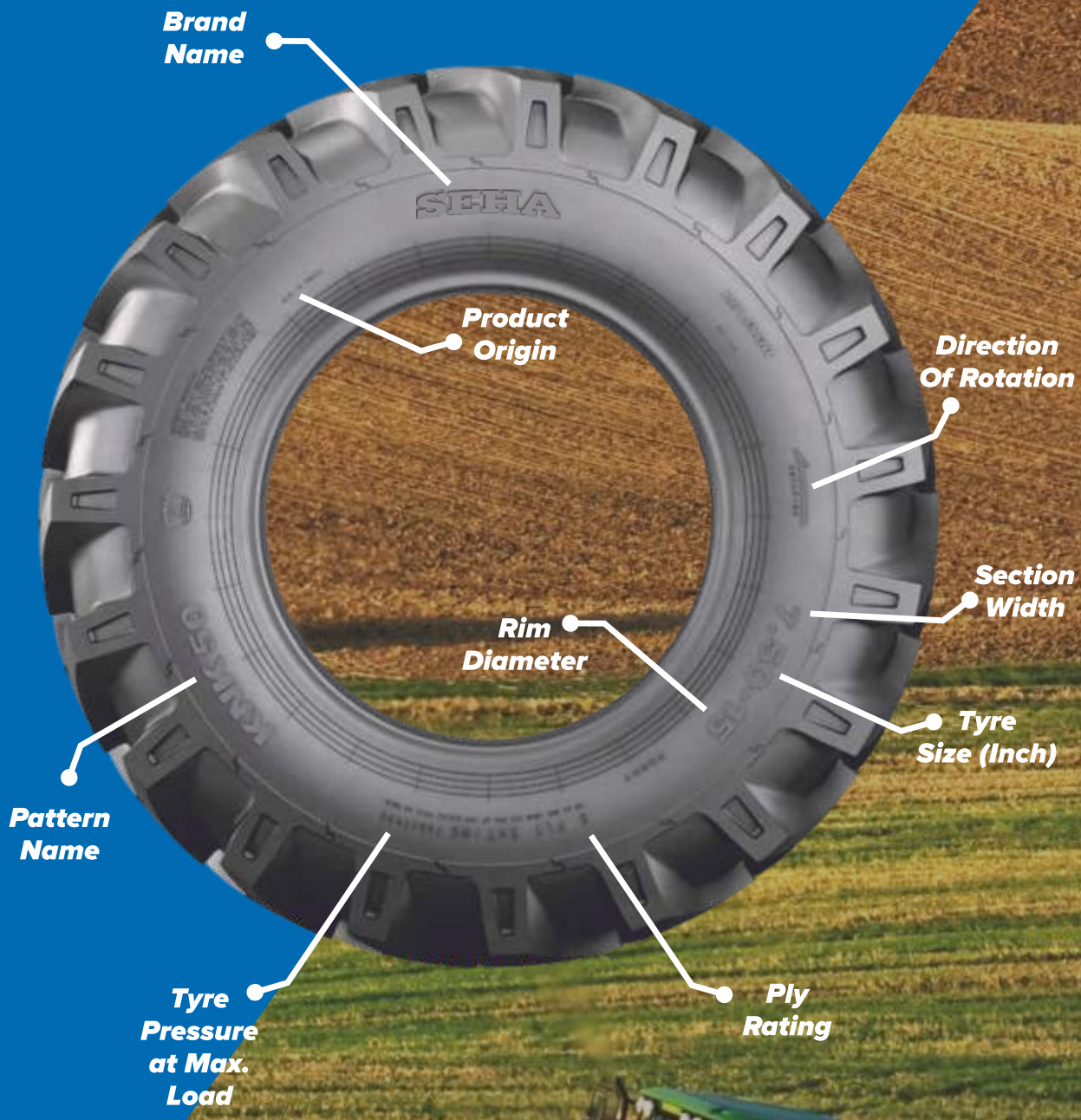
KNK12

KNK10

KNK14

TALAS-11

TALAS-23

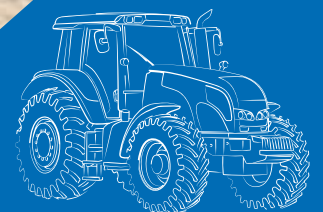




SEHA[®]
brand tyres

best fit for your needs

**AGRICULTURAL
TYRES**





- ✓ Comfortable drive due to flexible sidewall structure
- ✓ Mud repellent feature with its specially designed tread pattern
- ✓ High performance due to deep treads and wide base track



AGRO10

RADIAL TRACTOR TYRES

	Product Code	Tyre Size / Ply Rating	TT/TL	Inflated Unloaded Dimensions		Load Index	Speed Index	Load & Pressure		Dynamic Rolling Circumference	Static Loaded Radius
				Section Width	Overall Diameter			Tyre Load Capacity	Tyre Pressure At Max. Load		
				(mm)	(mm)			(Kg)	(Psi)		
65 SERIES	6524440	440/65 R24	TL	445	1.185	128/131	D/A8	1800/1950	35	3.555	538
	6524480	480/65 R24	TL	480	1.235	133/136	D/A8	2060/2240	35	3.705	559
	6524540	540/65 R24	TL	550	1.320	146/149	D/A8	3000/3250	34	3.960	593
	6526750	750/65 R26	TL	755	1.640	166/163	A8/B	5300/4875	34	4.920	727
	6528440	440/65 R28	TL	445	1.285	131/134	D/A8	1950/2120	35	3.855	588
	6528480	480/65 R28	TL	480	1.337	142/145	D/A8	2650/2900	35	4.011	610
	6528540	540/65 R28	TL	550	1.420	149/152	D/A8	3250/3550	35	4.260	643
	6528600	600/65 R28	TL	591	1.491	154/157	D/A8	3750/4125	34	4.473	670
	6530540	540/65 R30	TL	550	1.470	150/153	D/A8	3350/3650	34	4.410	668
	6532800	800/65 R32	TL	800	1.858	178/175	A8/B	7500/6900	46	5.574	830
	6534540	540/65 R34	TL	550	1.575	152/155	D/A8	3550/3875	34	4.725	720
	6538540	540/65 R38	TL	550	1.675	153/156	D/A8	3650/4000	34	5.025	771
	6538600	600/65 R38	TL	595	1.750	159/162	D/A8	4375/4750	35	5.250	801
	6538650	650/65 R38	TL	650	1.820	163/166	D/A8	4875/5300	34	5.460	829
6542650	650/65 R42	TL	650	1.913	165/168	D/A8	5150/5600	34	5.739	878	

	Product Code	Tyre Size / Ply Rating	TT/TL	Inflated Unloaded Dimensions		Load Index	Speed Index	Load & Pressure		Dynamic Rolling Circumference	Static Loaded Radius
				Section Width	Overall Diameter			Tyre Load Capacity	Tyre Pressure At Max. Load		
				(mm)	(mm)			(Kg)	(Psi)		
70 SERIES	7016240	240/70 R16	TL	245	745	104/104	A8/B	900/900	34	2.235	340
	7016260	260/70 R16	TL	260	770	109/109	A8/B	1030/1030	34	2.310	350
	7016280	280/70 R16	TL	282	798	112/112	A8/B	1120/1120	34	2.394	362
	7018280	280/70 R18	TL	282	849	114/114	A8/B	1180/1180	34	2.547	388
	7020260	260/70 R20	TL	260	875	113/113	A8/B	1150/1150	34	2.625	403
	7020280	280/70 R20	TL	282	900	116/116	A8/B	1250/1250	34	2.700	413
	7020300	300/70 R20	TL	295	952	120/117	A8/B	1400/1285	34	2.856	434
	7020320	320/70 R20	TL	319	982	113/113	A8/B	1150/1150	23	2.946	446
	7020360	360/70 R20	TL	357	1.042	129/129	A8/B	1850/1850	34	3.126	471
	7020380	380/70 R20	TL	380	1.082	122/122	A8/B	1500/1500	23	3.246	482
	7024320	320/70 R24	TL	319	1.095	116/116	A8/B	1250/1250	23	3.285	502
	7024360	360/70 R24	TL	357	1.152	122/122	A8/B	1500/1500	23	3.456	525
	7024380	380/70 R24	TL	380	1.190	125/125	A8/B	1650/1650	23	3.570	540
	7024420	420/70 R24	TL	418	1.248	130/130	A8/B	1900/1900	23	3.744	564
	7024460	460/70 R24	TL	460	1.260	152/149	A8/B	3550/3250	23	3.780	569
	7024480	480/70 R24	TL	480	1.320	138/135	A8/B	2360/2180	23	3.960	593
	7026480	480/70 R26	TL	480	1.380	139/136	A8/B	2430/2240	23	4.140	622
	7028360	360/70 R28	TL	357	1.255	125/125	A8/B	1650/1650	23	3.765	576
	7028380	380/70 R28	TL	380	1.293	127/127	A8/B	1750/1750	23	3.879	592
	7028420	420/70 R28	TL	418	1.351	133/133	A8/B	2060/2060	23	4.053	615
	7028480	480/70 R28	TL	480	1.425	140/140	A8/B	2500/2500	23	4.275	645
	7030420	420/70 R30	TL	418	1.400	134/131	A8/B	2120/1950	23	4.200	640
	7030480	480/70 R30	TL	480	1.480	141/138	A8/B	2575/2360	23	4.440	672
	7030600	600/70 R30	TL	595	1.605	158/156	A8/B	4250/4000	34	4.815	723
	7034480	480/70 R34	TL	479	1.580	143/140	A8/B	2725/2500	23	4.740	722
	7034520	520/70 R34	TL	516	1.640	148/146	A8/B	3150/3000	23	4.920	745
	7038480	480/70 R38	TL	480	1.685	145/142	A8/B	2900/2650	23	5.055	775
	7038520	520/70 R38	TL	516	1.750	150/147	A8/B	3350/3075	23	5.250	801
	7038580	580/70 R38	TL	580	1.830	155/152	A8/B	3875/3550	23	5.490	833
	7038710	710/70 R38	TL	720	1.965	171/174	D/A8	6150/6700	34	5.895	888
	7042710	710/70 R42	TL	720	2.061	173/176	D/A8	6500/7100	34	6.183	922

	Product Code	Tyre Size / Ply Rating	TT/TL	Inflated Unloaded Dimensions		Load Index	Speed Index	Load & Pressure		Dynamic Rolling Circumference	Static Loaded Radius
				Section Width	Overall Diameter			Tyre Load Capacity	Tyre Pressure At Max. Load		
				(mm)	(mm)			(Kg)	(Psi)		
80 SERIES	8042480	480/80 R42	TL	485	1.845	151/148	A8/B	3450/3150	23	5.535	849
	8046480	480/80 R46	TL	485	1.945	164/164	A8/B	5000/5000	46	5.835	899

	Product Code	Tyre Size / Ply Rating	TT/TL	Inflated Unloaded Dimensions		Load Index	Speed Index	Load & Pressure		Dynamic Rolling Circumference	Static Loaded Radius
				Section Width	Overall Diameter			Tyre Load Capacity	Tyre Pressure At Max. Load		
				(mm)	(mm)			(Kg)	(Psi)		
85 SERIES	8520280	280/85 R20 (11.2R20)	TL	282	984	112/109	A8/B	1120/1030	23	2.952	447
	8520320	320/85 R20 (12.4R20)	TL	319	1.052	119/116	A8/B	1360/1250	23	3.156	475
	8524280	280/85 R24 (11.2R24)	TL	282	1.086	115/112	A8/B	1215/1120	23	3.258	498
	8524320	320/85 R24 (12.4R24)	TL	319	1.154	122/119	A8/B	1500/1360	23	3.462	526
	8524340	340/85 R24 (13.6R24)	TL	343	1.188	125/122	A8/B	1650/1500	23	3.564	540
	8524380	380/85 R24 (14.9R24)	TL	380	1.256	131/128	A8/B	1950/1800	23	3.768	567
	8524420	420/85 R24 (16.9R24)	TL	418	1.324	137/134	A8/B	2300/2060	23	3.972	595
	8528280	280/85 R28 (11.2R28)	TL	282	1.187	118/115	A8/B	1320/1215	23	3.561	549
	8528320	320/85 R28 (12.4R28)	TL	320	1.255	124/121	A8/B	1600/1450	23	3.765	576
	8528340	340/85 R28 (13.6R28)	TL	343	1.289	127/124	A8/B	1750/1600	23	3.867	590
	8528380	380/85 R28 (14.9R28)	TL	380	1.357	133/130	A8/B	2060/1900	23	4.071	618
	8528420	420/85 R28 (16.9R28)	TL	418	1.425	139/136	A8/B	2430/2240	23	4.275	645
	8530380	380/85 R30 (14.9R30)	TL	380	1.408	135/132	A8/B	2180/2000	23	4.224	643
	8530420	420/85 R30 (16.9R30)	TL	418	1.476	140/137	A8/B	2500/2300	23	4.428	671
	8530460	460/85 R30 (18.4R30)	TL	455	1.544	145/142	A8/B	2900/2650	23	4.632	698
	8532320	320/85 R32 (12.4R32)	TL	320	1.365	126/126	A8/B	1700/1700	34	4.095	630
	8534420	420/85 R34 (16.9R34)	TL	418	1.578	142/139	A8/B	2650/2430	23	4.734	722
	8534460	460/85 R34 (18.4R34)	TL	455	1.646	147/144	A8/B	3075/2800	23	4.938	749
	8536320	320/85 R36 (12.4R36)	TL	320	1.465	128/125	A8/B	1800/1650	23	4.395	681
	8536340	340/85 R36 (13.6R36)	TL	343	1.495	132/129	A8/B	2000/1850	23	4.485	693
	8538320	320/85 R38 (12.4R38)	TL	320	1.515	143/143	A8/B	2725/2725	52	4.545	706
	8538340	340/85 R38 (13.6R38)	TL	343	1.545	133/130	A8/B	2060/1900	23	4.635	718
	8538380	380/85 R38 (14.9R38)	TL	380	1.611	139/136	A8/B	2430/2240	23	4.833	745
	8538420	420/85 R38 (16.9R38)	TL	418	1.679	144/141	A8/B	2800/2575	23	5.037	772
	8538460	460/85 R38 (18.4R38)	TL	455	1.747	149/146	A8/B	3250/3000	23	5.241	800
	8538520	520/85 R38 (20.8R38)	TL	516	1.849	155/152	A8/B	3875/3550	23	5.547	841
	8538650	650/85 R38 (20.8R38)	TL	650	2.071	173/176	D/A8	6500/7100	34	6.213	935
	8542520	520/85 R42 (20.8R42)	TL	516	1.955	157/157	A8/B	4125/4125	23	5.865	894
8546340	340/85 R46 (13.6R46)	TL	345	1.756	150/151	D/A8	3350/3450	52	5.268	823	
8548340	340/85 R48 (13.6R48)	TL	343	1.800	151/152	D/A8	3450/3550	58	5.490	845	

	Product Code	Tyre Size / Ply Rating	TT/TL	Inflated Unloaded Dimensions		Load Index	Speed Index	Load & Pressure		Dynamic Rolling Circumference	Static Loaded Radius
				Section Width	Overall Diameter			Tyre Load Capacity	Tyre Pressure At Max. Load		
				(mm)	(mm)			(Kg)	(Psi)		
90 SERIES	9046320	320/90 R46	TL	320	1.750	146/146	A8/B	3000/3000	46	5.250	820
	9046380	380/90 R46	TL	380	1.860	159/162	D/A8	4375/4750	58	5.580	865
	9050320	320/90 R50	TL	320	1.850	150/150	A8/B	3350/3350	52	5.643	870
	9054320*	320/90 R54	TL	320	1.950	155/155	A8/B	3875/3875	58	5.950	921

	Product Code	Tyre Size / Ply Rating	TT/TL	Inflated Unloaded Dimensions		Load Index	Speed Index	Load & Pressure		Dynamic Rolling Circumference	Static Loaded Radius
				Section Width	Overall Diameter			Tyre Load Capacity	Tyre Pressure At Max. Load		
				(mm)	(mm)			(Kg)	(Psi)		
95 SERIES	9520000	9.5 R20	TL	241	938	108/105	A8/B	1000/925	23	2.814	422
	9532210	210/95 R32	TL	215	1.215	114/114	A8/B	1180/1180	34	3.706	570
	9532230	230/95 R32	TL	230	1.255	128/128	A8/B	1800/1800	58	3.828	586
	9532270	270/95 R32	TL	275	1.330	136/136	A8/B	2240/2240	58	4.057	616
	9536210	210/95 R36	TL	215	1.320	118/118	A8/B	1320/1320	34	4.026	617
	9536230	230/95 R36	TL	230	1.355	130/130	A8/B	1900/1900	58	4.065	640
	9536270	270/95 R36	TL	275	1.435	139/139	A8/B	2430/2430	58	4.377	668
	9538270	270/95 R38	TL	275	1.485	140/140	A8/B	2500/2500	58	4.529	694
	9542230	230/95 R42	TL	230	1.505	133/136	D/A8	2060/2240	58	4.515	712
	9544210	210/95 R44	TL	215	1.520	120/120	A8/B	1400/1400	34	4.560	722
	9544230	230/95 R44	TL	230	1.560	132/132	A8/B	2000/2000	58	4.758	738
	9544270	270/95 R44	TL	275	1.635	142/142	A8/B	2650/2650	58	4.987	769
	9546270	270/95 R46	TL	275	1.685	143/143	A8/B	2725/2725	58	5.139	794
	9546300	300/95 R46	TL	300	1.740	148/148	A8/B	3150/3150	58	5.307	816
	9548230	230/95 R48	TL	230	1.660	136/136	A8/B	2240/2240	58	5.063	789
	9548270	270/95 R48	TL	275	1.735	144/144	A8/B	2800/2800	58	5.292	819
	9552300*	300/95 R52	TL	300	1.900	156/159	D/A8	4000/4375	58	5.795	895
	9554270*	270/95 R54	TL	275	1.885	146/146	A8/B	3000/3000	58	5.750	894



- ✓ Comfortable drive due to flexible sidewall structure
- ✓ Mud repellent feature with its specially designed tread pattern
- ✓ High performance due to deep treads and wide base track



AGRO11

RADIAL TRACTOR TYRES

	Product Code	Tyre Size / Ply Rating	TT/TL	Inflated Unloaded Dimensions		Load Index	Speed Index	Load & Pressure		Dynamic Rolling Circumference	Static Loaded Radius
				Section Width	Overall Diameter			Tyre Load Capacity	Tyre Pressure At Max. Load		
				(mm)	(mm)			(Kg)	(Psi)		
70 SERIES	704262011	620/70 R42	TL	625	1.935	166/166	A8/B	5300/5300	46	5.805	876

	Product Code	Tyre Size / Ply Rating	TT/TL	Inflated Unloaded Dimensions		Load Index	Speed Index	Load & Pressure		Dynamic Rolling Circumference	Static Loaded Radius
				Section Width	Overall Diameter			Tyre Load Capacity	Tyre Pressure At Max. Load		
				(mm)	(mm)			(Kg)	(Psi)		
75 SERIES	752662011	620/75 R26	TL	630	1.600	166/166	A8/B	5300/5300	46	4.800	711
	753062011	620/75 R30	TL	630	1.695	163/161	A8/B	4875/4625	35	5.085	759
	753265011	650/75 R32	TL	650	1.795	172/172	A8/B	6300/6300	46	5.385	805





- ✓ Tractor front tyre for general use
- ✓ Resistance to stone and impacts thanks to strong and robust body
- ✓ Smooth driving with gutters at central back
- ✓ Prevention of skidding thanks to treads in shoulders
- ✓ Long lasting and economic use
- ✓ Excellent performance in highway and land



KNK30 / 5H-42

FRONT TRACTOR TYRES

	Product Code	Tyre Size / Ply Rating	TT/TL	Inflated Unloaded Dimensions		Load Index	Speed Index	Load & Pressure		Dynamic Rolling Circumference	Static Loaded Radius
				Section Width	Overall Diameter			Tyre Load Capacity	Tyre Pressure At Max. Load		
				(mm)	(mm)			(Kg)	(Psi)		
KNK 30	31030	6.00-16 8PR	TT	165	735	93	A6	650	48	2.242	335
	32030	6.50-16 8PR	TT	175	760	97	A6	730	54	2.318	345
	34030	7.50-16 8PR	TT	205	805	103	A6	875	54	2.455	363



- ✓ Tractor front tyre for general use
- ✓ Resistance to stone and impacts thanks to strong and robust body
- ✓ Smooth driving with gutters at central back
- ✓ Prevention of skidding thanks to treads in shoulders
- ✓ Long lasting and economic use
- ✓ Excellent performance in highway and land



KNK32

FRONT TRACTOR TYRES

	Product Code	Tyre Size / Ply Rating	TT/TL	Inflated Unloaded Dimensions		Load Index	Speed Index	Load & Pressure		Dynamic Rolling Circumference	Static Loaded Radius
				Section Width	Overall Diameter			Tyre Load Capacity	Tyre Pressure At Max. Load		
				(mm)	(mm)			(Kg)	(Psi)		
KNK 32	34130	7.50-16 8PR	TT	205	805	103	A6	875	54	2.455	363
	35130	7.50-18 8PR	TT	205	860	106	A6	950	54	2.623	390
	35530	6.50-20 8PR	TT	175	865	102	A6	850	54	2.638	397
	36030	7.50-20 8PR	TT	205	915	108	A6	1000	49	2.791	417



- ✓ Suitable to asphalt and land usage
- ✓ Excellent maneuverability and nondirectional use
- ✓ Resistant structure against punctures
- ✓ Straight movement stability in soft land



KNK35

FRONT TRACTOR TYRES

	Product Code	Tyre Size / Ply Rating	TT/TL	Inflated Unloaded Dimensions		Load Index	Speed Index	Load & Pressure		Dynamic Rolling Circumference	Static Loaded Radius
				Section Width	Overall Diameter			Tyre Load Capacity	Tyre Pressure At Max. Load		
				(mm)	(mm)			(Kg)	(Psi)		
KNK 35	30520	5.50-16 8PR	TT	150	710	86	A6	530	54	2.166	325
	31130	6.00-16 8PR	TT	165	735	93	A6	650	48	2.242	335
	32130	6.50-16 8PR	TT	175	760	97	A6	730	54	2.318	345
	34330	7.50-16 8PR	TT	205	805	103	A6	875	54	2.455	363
	34630	9.00-16 8PR	TT	234	855	111	A6	1090	45	2.608	383
	34830	10.00-16 8PR	TT	274	895	115	A6	1215	41	2.730	399
	34930	11.00-16 8PR	TT	315	965	118	A6	1320	36	2.943	427
	35030	7.50-18 8PR	TT	205	860	106	A6	950	54	2.623	390



- ✓ High traction
- ✓ Easy movement ability with anti-ground feature
- ✓ Preventing clusters in the center and sidewalls during movement
- ✓ Facilitating releasing of muds thanks to windowed blocks



KNK50 / SH-39

FRONT TRACTOR TYRES

	Product Code	Tyre Size / Ply Rating	TT/TL	Inflated Unloaded Dimensions		Load Index	Speed Index	Load & Pressure		Dynamic Rolling Circumference	Static Loaded Radius
				Section Width	Overall Diameter			Tyre Load Capacity	Tyre Pressure At Max. Load		
				(mm)	(mm)			(Kg)	(Psi)		
KNK 50	30030	7.50-15 8PR	TT	205	780	99	A6	775	52	2.379	350
	31230	6.00-16 8PR	TT	165	735	93	A6	650	48	2.242	335
	32230	6.50-16 8PR	TT	175	760	97	A6	730	54	2.318	345
	34230	7.50-16 8PR	TT	205	805	103	A6	875	54	2.455	363
	35230	7.50-18 8PR	TT	205	860	106	A6	950	54	2.623	390
	36230	7.50-20 8PR	TT	205	915	108	A6	1000	49	2.791	417
	36530	9.5-20 8PR	TT	241	940	106	A6	950	35	2.867	427
	36730	11.2-20 8PR	TT	285	1.005	113	A6	1150	38	3.065	453



- ✓ High traction
- ✓ Easy movement ability with anti-ground feature
- ✓ Preventing clusters in the center and sidewalls during movement
- ✓ Facilitating releasing of muds thanks to windowed blocks



KNK50 / SH-39

REAR TRACTOR TYRES

	Product Code	Tyre Size / Ply Rating	TT/TL	Inflated Unloaded Dimensions		Load Index	Speed Index	Load & Pressure		Dynamic Rolling Circumference	Static Loaded Radius
				Section Width	Overall Diameter			Tyre Load Capacity	Tyre Pressure At Max. Load		
				(mm)	(mm)			(Kg)	(Psi)		
	50030	8.3-24 8PR	TT	210	1.009	108	A6	1000	35	3.077	465
	51030	9.5-24 8PR	TT	241	1.050	116	A6	1250	34	3.203	481
	51130	11.2-24 8PR	TT	284	1.105	116	A6	1250	34	3.370	503
	51150	11.2-24 12PR	TT	284	1.105	122	A6	1500	40	3.370	503
	51230	12.4-24 8PR	TT	315	1.160	118	A6	1320	29	3.538	525
	51250	12.4-24 12PR	TT	315	1.160	124	A6	1600	35	3.538	525
	51330	13.6-24 8PR	TT	345	1.210	123	A6	1550	28	3.691	545
	51350	13.6-24 12PR	TT	345	1.210	129	A6	1850	34	3.691	545
	51430	14.9-24 8PR	TT	378	1.265	128	A6	1800	26	3.858	567
	51440	14.9-24 10PR	TT	378	1.265	131	A6	1950	30	3.858	567
	51460	14.9-24 14PR	TT	378	1.265	137	A6	2300	38	3.858	567
	51970	15.5/80-24 16PR	TL	394	1.260	163	A6	4875	58	3.843	565
	51840	14.9-26 10PR	TT	378	1.315	133	A6	2060	30	4.011	592
	51860	14.9-26 14PR	TT	378	1.315	140	A6	2500	39	4.011	592
	51540	18.4-26 10PR	TT	467	1.461	142	A6	2650	26	4.456	650
	51570	18.4-26 16PR	TT	467	1.461	150	A6	3350	40	4.456	650
	52030	11.2-28 8PR	TT	284	1.205	118	A6	1320	34	3.675	553
	52130	12.4-28 8PR	TT	315	1.260	125	A6	1650	30	3.843	575
	52230	13.6-28 8PR	TT	345	1.310	125	A6	1650	29	3.996	595
	52330	14.9-28 8PR	TT	378	1.365	130	A6	1900	26	4.163	617
	52360	14.9-28 14PR	TT	378	1.365	143	A6	2725	40	4.163	617
	52540	16.9-28 10PR	TT	429	1.435	139	A6	2430	29	4.377	645
	52560	16.9-28 14PR	TT	429	1.435	143	A6	2725	34	4.377	645
	53030	14.9-30 8PR	TT	378	1.415	132	A6	2000	26	4.316	642
	53040	14.9-30 10PR	TT	378	1.415	136	A6	2240	29	4.316	642
	53140	16.9-30 12PR	TT	429	1.485	144	A6	2800	28	4.529	670
	53160	16.9-30 14PR	TT	429	1.485	150	A6	3350	34	4.529	670
	53240	18.4-30 10PR	TT	467	1.550	145	A6	2900	26	4.728	696
	53260	18.4-30 14PR	TT	467	1.550	154	A6	3750	40	4.728	696
	54130	8.3-32 8PR	TT	211	1.195	111	A6	1090	46	3.645	559
	54230	9.5-32 8PR	TT	241	1.250	115	A6	1215	39	3.813	581
	54330	12.4-32 8PR	TT	315	1.360	125	A6	1650	32	4.148	625
	55140	16.9-34 10PR	TT	429	1.585	142	A6	2650	29	4.834	720
	55160	16.9-34 14PR	TT	429	1.585	148	A6	3150	37	4.834	720
	55240	18.4-34 10PR	TT	467	1.650	146	A6	3000	26	5.033	746
	55260	18.4-34 14PR	TT	467	1.650	153	A6	3650	36	5.033	746
	55270	18.4-34 16PR	TT	467	1.650	159	A6	4375	45	5.033	746
	56030	12.4-36 8PR	TT	315	1.465	126	A6	1700	29	4.468	677
	56120	13.6-36 6PR	TT	345	1.515	125	A6	1650	23	4.621	697
	56130	13.6-36 8PR	TT	345	1.515	129	A6	1850	29	4.621	697
	56430	12.4-38 8PR	TT	315	1.515	127	A6	1750	29	4.621	703
	57030	13.6-38 8PR	TT	345	1.565	131	A6	1950	29	4.773	723
	57040	13.6-38 10PR	TT	345	1.565	135	A6	2180	33	4.773	723
	57130	14.00-38 8PR	TT	345	1.565	131	A6	1950	29	4.773	723
	57140	14.00-38 10PR	TT	345	1.565	135	A6	2180	33	4.773	723
	57250	15.5-38 12PR	TT	394	1.570	141	A6	2575	38	4.789	725
	57340	16.9-38 10PR	TT	429	1.685	145	A6	2900	30	5.139	771
	57360	16.9-38 14PR	TT	429	1.685	152	A6	3550	40	5.139	771
	57440	18.4-38 10PR	TT	467	1.750	147	A6	3075	26	5.338	797
	57460	18.4-38 14PR	TT	467	1.750	154	A6	3750	36	5.338	797

KNK 50



- ✓ High traction
- ✓ Easy movement ability with anti-ground feature
- ✓ Preventing clusters in the center and sidewalls during movement
- ✓ Facilitating releasing of muds thanks to windowed blocks



KNK53

REAR TRACTOR TYRES

	Product Code	Tyre Size / Ply Rating	TT/TL	Inflated Unloaded Dimensions		Load Index	Speed Index	Load & Pressure		Dynamic Rolling Circumference	Static Loaded Radius
				Section Width	Overall Diameter			Tyre Load Capacity	Tyre Pressure At Max. Load		
				(mm)	(mm)			(Kg)	(Psi)		
KNK 53	53350	16.9-30 12PR	TT	429	1.485	144	A6	2800	28	4.529	670



- ✓ High traction
- ✓ Easy movement ability with anti-ground feature
- ✓ Preventing clusters in the center and sidewalls during movement
- ✓ Facilitating releasing of muds thanks to windowed blocks



KNK55

REAR TRACTOR TYRES

	Product Code	Tyre Size / Ply Rating	TT/TL	Inflated Unloaded Dimensions		Load Index	Speed Index	Load & Pressure		Dynamic Rolling Circumference	Static Loaded Radius
				Section Width	Overall Diameter			Tyre Load Capacity	Tyre Pressure At Max. Load		
				(mm)	(mm)			(Kg)	(Psi)		
KNK 55	51680	14.9-24 8PR (IRRIGATION)	TT	378	1.265	127	A6	1750	26	3.858	567



- ✓ Highway, agricultural and off-road tyre with high load bearing capacity and low section
- ✓ Minimum ground holding feature thanks to wide circumference channels
- ✓ Moving forward easily without submerging thanks to its wide tread pattern
- ✓ Resistant structure against punctures thanks to increased tread depth



KNK48

HARVESTER TYRES

	Product Code	Tyre Size / Ply Rating	TT/TL	Inflated Unloaded Dimensions		Load Index	Speed Index	Load & Pressure		Dynamic Rolling Circumference	Static Loaded Radius
				Section Width	Overall Diameter			Tyre Load Capacity	Tyre Pressure At Max. Load		
				(mm)	(mm)			(Kg)	(Psi)		
KNK 48	46050	10.5/80-18 12PR	TT	274	885	135	A8	2180	65	2.699	400
	46260	12.5/80-18 14PR	TT	308	965	144	A8	2800	63	2.943	432
	46470	13.0/65-18 16PR	TT	336	890	144	A8	2800	66	2.715	402



- ✓ High traction
- ✓ Easy movement ability with anti-ground feature
- ✓ Preventing clusters in the center and sidewalls during movement
- ✓ Facilitating releasing of muds thanks to windowed blocks



KNK50 / SH-39

HARVESTER TYRES

	Product Code	Tyre Size / Ply Rating	TT/TL	Inflated Unloaded Dimensions		Load Index	Speed Index	Load & Pressure		Dynamic Rolling Circumference	Static Loaded Radius
				Section Width	Overall Diameter			Tyre Load Capacity	Tyre Pressure At Max. Load		
				(mm)	(mm)			(Kg)	(Psi)		
KNK 50	51780	23.1-26 18PR	TL	587	1.605	162	A6	4750	37	4.895	708
	67370	18.4-30 16PR	TT	467	1.550	158	A6	4250	45	4.728	696
	53580	23.1-30 18PR	TL	587	1.715	160	A6	4500	36	5.231	762
	57570	20.8-38 16PR	TT	528	1.840	162	A6	4750	39	5.612	833
	57670	20.8-38 16PR	TL	528	1.840	162	A6	4750	39	5.612	833



- ✓ Resistance to stone and impacts thanks to its improved base
- ✓ General purpose trailer tyre
- ✓ Long lasting and economic use
- ✓ Excellent performance in highway and land
- ✓ Mud-repellent feature thanks to its special pattern, enhanced traction



KNK25 / TALAS-23

FLOTATION TYRES

	Product Code	Tyre Size / Ply Rating	TT/TL	Inflated Unloaded Dimensions		Load Index	Speed Index	Load & Pressure		Dynamic Rolling Circumference	Static Loaded Radius
				Section Width	Overall Diameter			Tyre Load Capacity	Tyre Pressure At Max. Load		
				(mm)	(mm)			(Kg)	(Psi)		
KNK 25	47060	7.50-16 12PR	TT	214	787	121	A8	1450	72	2.400	346
		8.25-20 14PR	TT	234	970	133	A6	2060	90	2.959	427



- ✓ Resistance to stone and impacts thanks to its improved base
- ✓ General purpose trailer tyre
- ✓ Long lasting and economic use
- ✓ Excellent performance in highway and land
- ✓ Mud-repellent feature thanks to its special pattern, enhanced traction



KNK26

FLOTATION TYRES

	Product Code	Tyre Size / Ply Rating	TT/TL	Inflated Unloaded Dimensions		Load Index	Speed Index	Load & Pressure		Dynamic Rolling Circumference	Static Loaded Radius
				Section Width	Overall Diameter			Tyre Load Capacity	Tyre Pressure At Max. Load		
				(mm)	(mm)			(Kg)	(Psi)		
KNK 26	45160	9.00-16 16PR	TT	247	865	128	A6	1800	67	2.638	375



- ✓ Balanced driving and excellent traction thanks to its special design
- ✓ Increased water and mud discharge thanks to surrounded gutters
- ✓ Strong frame structure and high wear resistance
- ✓ Comfortable driving
- ✓ Retreadability feature



KNK27

FLOTATION TYRES

	Product Code	Tyre Size / Ply Rating	TT/TL	Inflated Unloaded Dimensions		Load Index	Speed Index	Load & Pressure		Dynamic Rolling Circumference	Static Loaded Radius
				Section Width	Overall Diameter			Tyre Load Capacity	Tyre Pressure At Max. Load		
				(mm)	(mm)			(Kg)	(Psi)		
KNK 27	45060	9.00-16 14PR	TT	247	865	128	A6	1800	67	2.638	375



- ✓ Convenient to use in asphalt and land thanks to back pattern
- ✓ Durable side wall with strong structure
- ✓ Soil holding feature with complex tread structure and channels
- ✓ Providing straight location to the ground thanks to back design



KNK28

FLOTATION TYRES

	Product Code	Tyre Size / Ply Rating	TT/TL	Inflated Unloaded Dimensions		Load Index	Speed Index	Load & Pressure		Dynamic Rolling Circumference	Static Loaded Radius
				Section Width	Overall Diameter			Tyre Load Capacity	Tyre Pressure At Max. Load		
				(mm)	(mm)			(Kg)	(Psi)		
KNK 28	44450	7.50-16 12PR	TT	214	787	121	A8	1450	72	2.400	346



- ✓ High load bearing capacity with strong structure and less soil compression with its wide base
- ✓ Anti-ground tread design



KNK42

FLOTATION TYRES

	Product Code	Tyre Size / Ply Rating	TT/TL	Inflated Unloaded Dimensions		Load Index	Speed Index	Load & Pressure		Dynamic Rolling Circumference	Static Loaded Radius
				Section Width	Overall Diameter			Tyre Load Capacity	Tyre Pressure At Max. Load		
				(mm)	(mm)			(Kg)	(Psi)		
KNK 42	42150	260/70-15.3 (10.0/75-15.3) 12PR	TL	268	753	126	A8	1700	52	2.297	331
	42360	300/80-15.3 (11.5/80-15.3) 14PR	TL	295	869	141	A8	2575	58	2.650	374



- ✓ Highway, agricultural and off-road tyre with high load bearing capacity and low section
- ✓ Minimum ground holding feature thanks to wide circumference channels
- ✓ Moving forward easily without submerging thanks to its wide tread pattern
- ✓ Resistant structure against punctures thanks to increased tread depth



KNK48

FLOTATION TYRES

	Product Code	Tyre Size / Ply Rating	TT/TL	Inflated Unloaded Dimensions		Load Index	Speed Index	Load & Pressure		Dynamic Rolling Circumference	Static Loaded Radius
				Section Width	Overall Diameter			Tyre Load Capacity	Tyre Pressure At Max. Load		
				(mm)	(mm)			(Kg)	(Psi)		
KNK 48	43650	10.0/75-15.3 (260/70-15.3) 12PR	TL	264	760	126	A8	1700	68	2.318	334
	43760	11.5/80-15.3 (300/80-15.3) 14PR	TL	290	845	139	A8	2430	69	2.577	365
	43860	12.5/80-15.3 (320/80-15.3) 14PR	TL	307	889	142	A8	2650	62	2.711	382
	45250	10.5/65-16 (265/65-16) 12PR	TT	274	755	126	A8	1700	65	2.303	334



- ✓ High load bearing capacity with low section off-road and agricultural tyre
- ✓ Holding features for dry and wet grounds thanks to its pattern



KNK52

FLOTATION TYRES

	Product Code	Tyre Size / Ply Rating	TT/TL	Inflated Unloaded Dimensions		Load Index	Speed Index	Load & Pressure		Dynamic Rolling Circumference	Static Loaded Radius
				Section Width	Overall Diameter			Tyre Load Capacity	Tyre Pressure At Max. Load		
				(mm)	(mm)			(Kg)	(Psi)		
KNK 52	43350	10.0/75-15.3 (260/70-15.3) 12PR	TL	264	760	126	A8	1700	68	2.318	334
	43460	11.5/80-15.3 (300/80-15.3) 14PR	TL	290	845	139	A8	2430	69	2.577	365



- ✓ Highway, agricultural and off-road tyre with high load bearing capacity and low section
- ✓ Minimum ground holding feature thanks to wide circumference channels
- ✓ Moving forward easily without submerging thanks to its wide tread pattern
- ✓ Resistant structure against punctures thanks to increased tread depth



KNK56

HARVESTER TYRES

	Product Code	Tyre Size / Ply Rating	TT/TL	Inflated Unloaded Dimensions		Load Index	Speed Index	Load & Pressure		Dynamic Rolling Circumference	Static Loaded Radius
				Section Width	Overall Diameter			Tyre Load Capacity	Tyre Pressure At Max. Load		
				(mm)	(mm)			(Kg)	(Psi)		
KNK 56	43970	12.5/80-15.3 (320/80-15.3) 16PR	TL	307	889	144	A8	2800	71	2.711	382
	44180	400/60-15.5 18PR	TL	404	874	151	A8	3450	90	2.666	377
	48470	550/60-22.5 16PR	TL	543	1.244	154	A8	3750	41	3.794	538



- ✓ High traction
- ✓ Easy movement ability with anti-ground feature
- ✓ Preventing clusters in the center and sidewalls during movement
- ✓ Facilitating releasing of muds thanks to windowed blocks



KNK46

HARVESTER TYRES

	Product Code	Tyre Size / Ply Rating	TT/TL	Inflated Unloaded Dimensions		Load Index	Speed Index	Load & Pressure		Dynamic Rolling Circumference	Static Loaded Radius
				Section Width	Overall Diameter			Tyre Load Capacity	Tyre Pressure At Max. Load		
				(mm)	(mm)			(Kg)	(Psi)		
KNK 46	45660	500/50-17 14PR	TL	503	932	149	A8	3250	41	2.843	403



- ✓ High traction
- ✓ Easy movement ability with anti-ground feature
- ✓ Preventing clusters in the center and sidewalls during movement
- ✓ Facilitating releasing of muds thanks to windowed blocks



KNK50 / SH-39

IMPLEMENT TYRES

	Product Code	Tyre Size / Ply Rating	TT/TL	Inflated Unloaded Dimensions		Load Index	Speed Index	Load & Pressure		Dynamic Rolling Circumference	Static Loaded Radius
				Section Width	Overall Diameter			Tyre Load Capacity	Tyre Pressure At Max. Load		
				(mm)	(mm)			(Kg)	(Psi)		
KNK 50	18120	6.50/80-15 6PR	TT	163	663	96	A6	710	52	2.022	303



- ✓ High load bearing capacity with low section off-road and agricultural tyre
- ✓ Holding features for dry and wet grounds thanks to its pattern



KNK52

IMPLEMENT TYRES

	Product Code	Tyre Size / Ply Rating	TT/TL	Inflated Unloaded Dimensions		Load Index	Speed Index	Load & Pressure		Dynamic Rolling Circumference	Static Loaded Radius
				Section Width	Overall Diameter			Tyre Load Capacity	Tyre Pressure At Max. Load		
				(mm)	(mm)			(Kg)	(Psi)		
KNK 52	15010	4.50-10 4PR	TT	124	490	49	A6	185	30	1.495	221
	16110	5.00-12 4PR	TT	145	580	62	A6	265	32	1.769	262
	17320	7.00-12 6PR	TT	200	683	83	A6	487	36	2.083	304



- ✓ High traction
- ✓ Easy movement ability with anti-ground feature
- ✓ Preventing clusters in the center and sidewalls during movement
- ✓ Facilitating releasing of muds thanks to windowed blocks



KNK54

IMPLEMENT TYRES

	Product Code	Tyre Size / Ply Rating	TT/TL	Inflated Unloaded Dimensions		Load Index	Speed Index	Load & Pressure		Dynamic Rolling Circumference	Static Loaded Radius
				Section Width	Overall Diameter			Tyre Load Capacity	Tyre Pressure At Max. Load		
				(mm)	(mm)			(Kg)	(Psi)		
KNK 54	17020	6.50/80-12 6PR	TT	163	588	80	A6	450	52	1.793	266
	17520	6.50/80-13 6PR	TT	170	640	82	A6	475	52	1.952	289



- ✓ Proper use in lands and gardens
- ✓ Strong and robust structure
- ✓ Preventing skidding thanks to its special pattern
- ✓ Long lasting and economic use
- ✓ Optimum performance with small-type gardening and agriculture vehicles



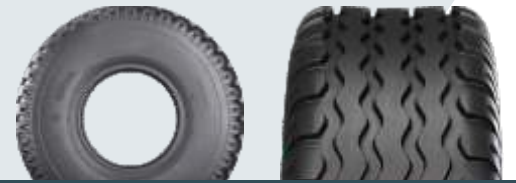
KNK140

IMPLEMENT TYRES

	Product Code	Tyre Size / Ply Rating	TT/TL	Inflated Unloaded Dimensions		Load Index	Speed Index	Load & Pressure		Dynamic Rolling Circumference	Static Loaded Radius
				Section Width	Overall Diameter			Tyre Load Capacity	Tyre Pressure At Max. Load		
				(mm)	(mm)			(Kg)	(Psi)		
KNK 140	18020	5.00-15 6PR	TT	145	655	76	A6	400	50	1.998	300



- ✓ High tread depth
- ✓ Low rolling resistance
- ✓ High comfort
- ✓ Low soil compact feature thanks to its wide base



KNK48

IMPLEMENT TYRES

	Product Code	Tyre Size / Ply Rating	TT/TL	Inflated Unloaded Dimensions		Load Index	Speed Index	Load & Pressure		Dynamic Rolling Circumference	Static Loaded Radius
				Section Width	Overall Diameter			Tyre Load Capacity	Tyre Pressure At Max. Load		
				(mm)	(mm)			(Kg)	(Psi)		
KNK 48	17640	10.0/80-12 10PR	TL	264	710	116	A8	1250	57	2.166	314



SEHA[®]
brand tyres

best fit for your needs

INDUSTRIAL, EM, OTR





- ✓ High traction and comfort
- ✓ Longer service life
- ✓ Comfortable drive due to flexible sidewall structure
- ✓ Strong carcass structure
- ✓ Resistance to fatigue due to wide shoulder and blocks
- ✓ Strong tread compound for cut-resistance
- ✓ High performance due to wide base track
- ✓ Mud repellent feature due to specially designed tread pattern



OR71

RADIAL EM TYRES

	Product Code	Tyre Size / Ply Rating	TT/TL	Inflated Unloaded Dimensions		Load Index	Speed Index	Load & Pressure		Dynamic Rolling Circumference	Static Loaded Radius
				Section Width	Overall Diameter			Tyre Load Capacity	Tyre Pressure At Max. Load		
				(mm)	(mm)			(Kg)	(Psi)		
OR 71	7024460	460/70 R24	TL	455	1.255	159/159	A8/B	4375/4375	58	3.780	580
	8024440	440/80 R24	TL	450	1.320	154/154	A8/B	3750/3750	46	3.980	595
	8028440	440/80 R28	TL	450	1.420	156/156	A8/B	4000/4000	46	4.260	645



- ✓ Resistance to stone cuts, cracks and breaks
- ✓ Long wear-life



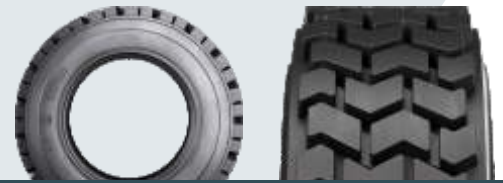
KNK44

EM / INDUSTRIAL TYRES

	Product Code	Tyre Size / Ply Rating	TT/TL	Inflated Unloaded Dimensions		Load Index	Speed Index	Load & Pressure		Dynamic Rolling Circumference	Static Loaded Radius
				Section Width	Overall Diameter			Tyre Load Capacity	Tyre Pressure At Max. Load		
				(mm)	(mm)			(Kg)	(Psi)		
KNK 44	62470	10.00-20 16PR	TT	283	1.084	146/143	A8	3000	130	3.306	484
	62570	10.00-20 16PR	TL	283	1.084	146/143	A8	3000	130	3.306	484



- ✓ Long wear-life
- ✓ Cracking / fatigue resistance at treads
- ✓ Maximum traction
- ✓ Increased sidewall protection



KNK65

EM / INDUSTRIAL TYRES

	Product Code	Tyre Size / Ply Rating	TT/TL	Inflated Unloaded Dimensions		Load Index	Speed Index	Load & Pressure		Dynamic Rolling Circumference	Static Loaded Radius
				Section Width	Overall Diameter			Tyre Load Capacity	Tyre Pressure At Max. Load		
				(mm)	(mm)			(Kg)	(Psi)		
KNK 65	60150	10-16.5 12PR	TL	282	775	138	A3	2360	84	2.364	352
	60360	12-16.5 14PR	TL	320	846	148	A3	3150	90	2.580	380



- ✓ Long wear-life
- ✓ Cracking / fatigue resistance at treads
- ✓ Maximum traction
- ✓ Increased sidewall protection



KNK66

EM/ INDUSTRIAL TYRES

	Product Code	Tyre Size / Ply Rating	TT/TL	Inflated Unloaded Dimensions		Load Index	Speed Index	Load & Pressure		Dynamic Rolling Circumference	Static Loaded Radius
				Section Width	Overall Diameter			Tyre Load Capacity	Tyre Pressure At Max. Load		
				(mm)	(mm)			(Kg)	(Psi)		
KNK 66	60250	10-16.5 12PR	TL	282	775	138	A3	2360	84	2.323	352
	60460	12-16.5 14PR	TL	320	846	148	A3	3150	90	2.524	380
	61460	12.5/80-18 14PR	TL	305	983	146	A8	3000	62	2.923	439



- ✓ High traction and excellent self-cleaning feature in any conditions thanks to deep and corrugated tread structure
- ✓ Resistance to stone cuts, cracks and breaks
- ✓ Higher wear and root resistance thanks to using bar in the center
- ✓ Resistance to any kind of impacts
- ✓ Long wear-life



IND80 / SH-R4-IND

EM / INDUSTRIAL TYRES

	Product Code	Tyre Size / Ply Rating	TT/TL	Inflated Unloaded Dimensions		Load Index	Speed Index	Load & Pressure		Dynamic Rolling Circumference	Static Loaded Radius
				Section Width	Overall Diameter			Tyre Load Capacity	Tyre Pressure At Max. Load		
				(mm)	(mm)			(Kg)	(Psi)		
IND 80	60550	10-16.5 12PR	TL	256	793	138	A3	2360	84	2.419	359
	60760	12-16.5 14PR	TL	297	858	144	A3	2800	83	2.617	385
	61150	10.5/80-18 12PR	TL	271	892	135	A8	2180	62	2.721	403
	61560	12.5/80-18 14PR	TL	285	955	146	A8	3000	62	2.913	428
	61960	14.5-20 14PR	TL	355	1.095	143	D	2725	51	3.340	489
	62770	16.0/70-20 16PR	TL	385	1.091	166	A2	5300	65	3.328	487
	62870	15.5/80-24 16PR	TL	412	1.269	162	A8	4750	72	3.870	569
	63770	16.0/70-24 16PR	TL	418	1.200	169	A2	5800	65	3.660	541
	63970	16.9-24 16PR	TL	429	1.310	154	A8	3750	46	3.996	585
	65660	17.5L-24 14PR	TL	475	1.277	154	A8	3750	46	3.895	572
	68160	15.5-25 14PR	TL	400	1.325	173	A2	6500	68	4.041	594
	65160	18.4-26 14PR	TL	467	1.425	160	A8	4500	42	4.346	636
	66160	16.9-28 14PR	TL	429	1.410	156	A8	4000	43	4.301	635
	69570	16.9-30 16PR	TL	418	1.466	156	A8	4000	47	4.471	663



- ✓ Robust industrial pattern with higher resistance to puncture and tread wear
- ✓ Higher traction with wide pattern design at the center lug
- ✓ Reinforced bead design



IND88

IMPLEMENT TYRES

	Product Code	Tyre Size / Ply Rating	TT/TL	Inflated Unloaded Dimensions		Load Index	Speed Index	Load & Pressure		Dynamic Rolling Circumference	Static Loaded Radius
				Section Width	Overall Diameter			Tyre Load Capacity	Tyre Pressure At Max. Load		
				(mm)	(mm)			(Kg)	(Psi)		
IND 88	61760	340/80-18 14PR	TL	343	1.001	146	A8	3000	62	3.053	446



- ✓ Strong and durable thanks to excellent design
- ✓ Its compound resistant to wear, and its blocks resistant to heavy conditions with long maintenance periods
- ✓ Minimizing stretching at base with its strong blocks in its center



KNK70

OFF THE ROAD TYRES

	Product Code	Tyre Size / Ply Rating	TT/TL	Inflated Unloaded Dimensions		Load Index	Speed Index	Load & Pressure		Dynamic Rolling Circumference	Static Loaded Radius
				Section Width	Overall Diameter			Tyre Load Capacity	Tyre Pressure At Max. Load		
				(mm)	(mm)			(Kg)	(Psi)		
KNK 70	67610	14.00-24 24PR	TL	375	1.360	186	A2	9500	123	4.148	605
	67650	14.00-24 32PR	TL	375	1.360	190	A2	10600	145	4.148	605
	64190	17.5-25 20PR	TL	455	1.371	181	A2	8250	83	4.182	612
	64310	20.5-25 24PR	TL	531	1.527	189	A2	10300	76	4.657	674
	64510	23.5-25 24PR	TL	604	1.625	196	A2	12500	68	4.956	714
	64730	26.5-25 28PR	TL	702	1.785	203	A2	15500	68	5.444	778
	64750	26.5-25 32PR	TL	702	1.785	206	A2	17000	79	5.444	778
	64950	29.5-25 32PR	TL	758	1.923	210	A2	19000	72	5.865	833



- ✓ High traction and excellent self-cleaning feature in any conditions thanks to deep and corrugated tread structure
- ✓ Resistance to stone cuts, cracks and breaks
- ✓ Higher wear and root resistance thanks to using bar in the center
- ✓ Resistance to any kind of impacts
- ✓ Long wear-life



KNK72

OFF THE ROAD TYRES

	Product Code	Tyre Size / Ply Rating	TT/TL	Inflated Unloaded Dimensions		Load Index	Speed Index	Load & Pressure		Dynamic Rolling Circumference	Static Loaded Radius
				Section Width	Overall Diameter			Tyre Load Capacity	Tyre Pressure At Max. Load		
				(mm)	(mm)			(Kg)	(Psi)		
KNK 72	63370	13.00-24 16PR	TL	335	1.280	151	A8	3450	58	3.904	573
	63570	14.00-24 16PR	TL	382	1.354	153	A8	3650	54	4.130	603



- ✓ Strong structure
- ✓ Increased tread depth and tread pattern providing optimum traction in muddy fields



KNK 74

OFF THE ROAD TYRES

	Product Code	Tyre Size / Ply Rating	TT/TL	Inflated Unloaded Dimensions		Load Index	Speed Index	Load & Pressure		Dynamic Rolling Circumference	Static Loaded Radius
				Section Width (mm)	Overall Diameter (mm)			Tyre Load Capacity (Kg)	Tyre Pressure At Max. Load (Psi)		
KNK 74	62970	16.00-24 16PR	TL	432	1.493	160	A8	4000	47	4.554	658



- ✓ Wide shoulder and base width, blocked design
- ✓ High traction ability
- ✓ Anti-wear future thanks to its pattern appropriate for agricultural, industrial and off-road use
- ✓ Consisting durable blocks
- ✓ Easy use in soft grounds
- ✓ Balanced driving and easy control thanks to wide shoulder and blocks



KNK 77

COMPACTOR TYRES

	Product Code	Tyre Size / Ply Rating	TT/TL	Inflated Unloaded Dimensions		Load Index	Speed Index	Load & Pressure		Dynamic Rolling Circumference	Static Loaded Radius
				Section Width (mm)	Overall Diameter (mm)			Tyre Load Capacity (Kg)	Tyre Pressure At Max. Load (Psi)		
KNK 77	65360	23.1-26 14PR	TL	587	1.580	166	A8	5300	33	4.819	698



- ✓ Compressing ability for asphalt with its plane surfaced tread pattern
- ✓ Stable operation feature thanks to strong frame at sidewalls



KNK88

COMPACTOR TYRES

	Product Code	Tyre Size / Ply Rating	TT/TL	Inflated Unloaded Dimensions		Load Index	Speed Index	Load & Pressure		Dynamic Rolling Circumference	Static Loaded Radius
				Section Width	Overall Diameter			Tyre Load Capacity	Tyre Pressure At Max. Load		
				(mm)	(mm)			(Kg)	(Psi)		
KNK 88	62250	9.00-20 12PR	TT	256	1.002	157	A2	4125	94	3.056	452
	62620	11.00-20 16PR	TT	290	1.040	168	A2	5600	107	3.172	467



- ✓ High kilometer performance thanks to its special structure
- ✓ Comfortable driving thanks to excellent traction
- ✓ Maximum traction
- ✓ Long wear-life
- ✓ Resistance to any kind of impacts



KNK40

FORKLIFT TYRES

	Product Code	Tyre Size / Ply Rating	TT/TL	Inflated Unloaded Dimensions		Load Index	Speed Index	Load & Pressure		Dynamic Rolling Circumference	Static Loaded Radius
				Section Width	Overall Diameter			Tyre Load Capacity	Tyre Pressure At Max. Load		
				(mm)	(mm)			(Kg)	(Psi)		
KNK 40	91050	6.00-9 12PR	TT	165	544	121	A5	1450	120	1.659	233
	92050	6.50-10 12PR	TT	181	592	125	A5	1650	110	1.806	254
	93060	7.00-12 14PR	TT	195	674	134	A5	2120	110	2.056	291
	94060	8.15-15 (28*9-15) 14PR	TT	220	710	146	A5	3000	145	2.166	314
	94180	8.25-15 18PR	TT	240	840	153	A5	3650	145	2.562	363

SEHA[®]
brand tyres

best fit for your needs

LIGHT TRUCK





- ✓ Strong frame structure and high wear resistance
- ✓ Balanced driving thanks to its corrugated pattern
- ✓ Increased water discharge thanks to its corrugated gutters
- ✓ Increased road bend ability and excellent traction
- ✓ Retreadability feature



KNK20 / TALAS-11

LIGHT TRUCK & MINIBUS TYRES

	Product Code	Tyre Size / Ply Rating	TT/TL	Inflated Unloaded Dimensions		Load Index	Speed Index	Load & Pressure		Dynamic Rolling Circumference	Static Loaded Radius
				Section Width	Overall Diameter			Tyre Load Capacity	Tyre Pressure At Max. Load		
				(mm)	(mm)			(Kg)	(Psi)		
KNK 20	21440	7.50-15 10PR	TT	235	789	114/112	L	2360/4480	76	2.406	344
	22040	6.50-16 10PR	TT	176	748	108/107	L	2000/3900	73	2.281	331
	23040	7.00-16 10PR	TT	198	785	113/112	L	2300/4480	76	2.394	345
	24050	7.50-16 12PR	TT	210	810	121/120	L	2900/5600	94	2.471	355



- ✓ Balanced driving and excellent traction thanks to its special corrugated pattern
- ✓ Increased water and mud resistance thanks to its surrounding gutters
- ✓ Strong frame structure and high wear resistance
- ✓ Comfortable driving
- ✓ Retreadability feature



KNK24

LIGHT TRUCK & MINIBUS TYRES

	Product Code	Tyre Size / Ply Rating	TT/TL	Inflated Unloaded Dimensions		Load Index	Speed Index	Load & Pressure		Dynamic Rolling Circumference	Static Loaded Radius
				Section Width	Overall Diameter			Tyre Load Capacity	Tyre Pressure At Max. Load		
				(mm)	(mm)			(Kg)	(Psi)		
KNK 24	24150	7.50-16 12PR	TT	210	810	121/120	L	2900/5600	94	2.471	355



- ✓ Optimum performance in traction and brakes due to special deep back pattern
- ✓ Strong frame structure and high wear resistance
- ✓ Anti-stone increased water and mud resistance thanks to its surrounding gutters
- ✓ Retreadability feature



KNK25 / TALAS-23

LIGHT TRUCK & MINIBUS TYRES

	Product Code	Tyre Size / Ply Rating	TT/TL	Inflated Unloaded Dimensions		Load Index	Speed Index	Load & Pressure		Dynamic Rolling Circumference	Static Loaded Radius
				Section Width	Overall Diameter			Tyre Load Capacity	Tyre Pressure At Max. Load		
				(mm)	(mm)			(Kg)	(Psi)		
KNK 25	2425	7.50-16 12PR	TT	210	810	121/120	L	2900/5600	94	2.471	355



- ✓ Balanced driving and excellent traction thanks to its special corrugated pattern
- ✓ Increased water and mud resistance thanks to its surrounding gutters
- ✓ Strong frame structure and high wear resistance
- ✓ Comfortable driving
- ✓ Retreadability feature



KNK126

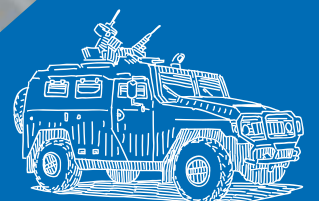
LIGHT TRUCK & MINIBUS TYRES

	Product Code	Tyre Size / Ply Rating	TT/TL	Inflated Unloaded Dimensions		Load Index	Speed Index	Load & Pressure		Dynamic Rolling Circumference	Static Loaded Radius
				Section Width	Overall Diameter			Tyre Load Capacity	Tyre Pressure At Max. Load		
				(mm)	(mm)			(Kg)	(Psi)		
KNK 126	21540	7.50-15 10PR	TT	235	786	114/112	L	2360/4480	76	2.397	342
	22140	6.50-16 10PR	TT	176	748	108/107	L	2000/3900	73	2.281	331
	23140	7.00-16 10PR	TT	198	785	113/112	L	2300/4480	76	2.394	345
	24350	7.50-16 12PR	TT	210	810	121/120	L	2900/5600	94	2.471	355

SEHA[®]
brand tyres

best fit for your needs

MILITARY





- ✓ Pattern feature designed for non-road and highway use
- ✓ Excellent maneuverability due to nondirectional use feature



KNK 12

MILITARY TYRES

	Product Code	Tyre Size / Ply Rating	TT/TL	Inflated Unloaded Dimensions		Load Index	Speed Index	Load & Pressure		Dynamic Rolling Circumference	Static Loaded Radius
				Section Width	Overall Diameter			Tyre Load Capacity	Tyre Pressure At Max. Load		
				(mm)	(mm)			(Kg)	(Psi)		
KNK 12	75250	12.5-20 12PR	TT	325	1.040	132	F	2000	51	3.172	454



- ✓ Wide base, designed for use at asphalt and off-road (land)
- ✓ Self-cleaning tread structure in asphalt use
- ✓ Suitable for any weather conditions, excellent traction
- ✓ High drift endurance due to diagonal tread structure



KNK 10

MILITARY TYRES

	Product Code	Tyre Size / Ply Rating	TT/TL	Inflated Unloaded Dimensions		Load Index	Speed Index	Load & Pressure		Dynamic Rolling Circumference	Static Loaded Radius
				Section Width	Overall Diameter			Tyre Load Capacity	Tyre Pressure At Max. Load		
				(mm)	(mm)			(Kg)	(Psi)		
KNK 10	7749	14.00-20 20PR	TT	375	1.260	161/158	F	4625	108	3.843	536



- ✓ Military tyre for both off the road and highway application
- ✓ More resistance with multilayer carcass body across puncture
- ✓ Self-cleaning lug design



KNK 14

MILITARY TYRES

	Product Code	Tyre Size / Ply Rating	TT/TL	Inflated Unloaded Dimensions		Load Index	Speed Index	Load & Pressure		Dynamic Rolling Circumference	Static Loaded Radius
				Section Width	Overall Diameter			Tyre Load Capacity	Tyre Pressure At Max. Load		
				(mm)	(mm)			(Kg)	(Psi)		
KNK 14	7423	13.00-18 8PR	TT	354	1.125	131	F	1950	43	3.431	479

SEHA[®]
brand tyres

best fit for your needs



made in Türkiye



tyre.seha.com.tr
www.seha.com.tr



Seha Mühendislik Müşavirlik Ticaret ve Makina Sanayi A.Ş.

Ayten Sk. No:27 Mebusevleri
06580 Çankaya - Ankara - TÜRKİYE
T. : +90 (312) 215 75 00
F. : +90 (312) 223 49 78
+90 (312) 215 75 15

tyre@seha.com.tr
tire@seha.com.tr
info@seha.com.tr

